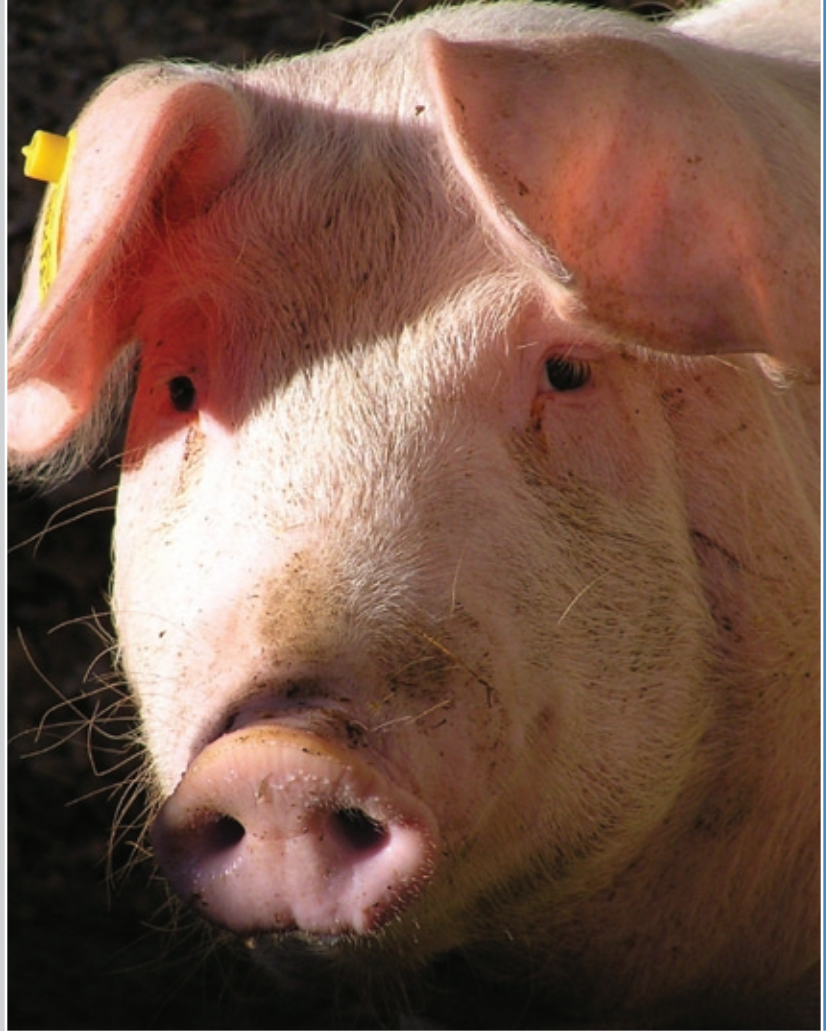


ag products

**Products Specially
Designed to Meet the
Needs of Hog Farming**

When you purchase barkman products, you benefit from more than 60 years of experience in producing innovative concrete products of the finest quality. We use only superior grade materials and apply the latest technologies (including computerized batching controls) in the manufacturing processes. We maintain our own testing labs to ensure that barkman products provide the ultimate in durability and endurance. At barkman your satisfaction is our number one concern. You have our word on it.



concrete products for hog producers



slats

The Best Slats for Your Hog Barns

Made from high quality precast concrete, barkman hog slats offer exceptional value for your hog barns. Not only do barkman concrete slats provide a cleaner, dryer and healthier environment for your animals, but they also provide a number of important advantages over conventional hog farm flooring including safer footing, improved sanitation and superior long-term durability. barkman offers a wide selection of slat styles and sizes to meet the needs of your farm, all manufactured according to demanding specifications using the highest quality materials available. If you seek the best in concrete slats, you can't do better than barkman.

- Self-cleaning openings
- Grinding technique used on openings for smoother edges
- Designed for comfort and reduced injury
- Semi-dry precast concrete (durable and strong)
- Extra sure footing
- Modular design for easy installation



Filter Crete Standard



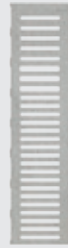
Filter Crete with knockout



Grower Slat



Double Dry Sow Slat



Single Dry Sow Slat



Double "T" Dry Sow Slat



Single "T" Dry Sow Slat



Hog Gang Slat



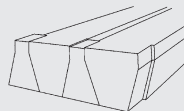
Boar Slat



Gestation "T" Pad



Gestation Pad



Individual Slat (not to scale)

penning



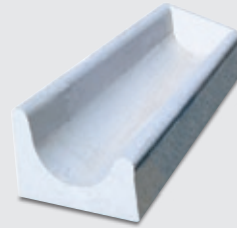
Solid and Slotted Penning

Available in either solid or slotted design, barkman penning is virtually indestructible and will not deteriorate. Its modular design makes it easy to install and allows you to create pen sizes specific to your needs. The reinforced concrete panels are ideal for installation into both new and renovated barns. The specially slotted designed panels allow air movement between pens and, in breeding pens, contact between boars and sows.

Pen Wall Sections

barkman penning sections are available in a variety of sizes up to a maximum of 10' long and 42" high. Pen wall sections are available with cast-in-place nuts for bolting gate hinges or stainless steel angles cast into the top and bottom corners to allow welding to other panels and to the floor. Whatever your requirements, we can accommodate the need.

sow trough



barkman's sow trough is made in four foot sections, features rounded corners and is available with left or right ends.

sump pump pit



barkman's 3', 4' and 5' inside diameter sump pump pits can accommodate either submersible or long shaft pumps. These units stack easily and are available with or without bottoms and with two piece concrete lids.

Other Products Available:

- Lagoon Spillways
- Lagoon Ramps

Barkman Concrete Limited

Steinbach Office, 152 Brandt Street, Steinbach, MB R5G 0R2
T (204) 326 3445 or 1 800 461 2278 F (204) 326 5915 steinbach@barkmanconcrete.com

barkmanag.com